

Instruction

Firmware Upgrade picture optimizer plus

What is needed?

In order to upgrade **cinemateq picture optimizer plus** with a new firmware you will need the following equipment:

- PC with integrated serial port and Microsoft Windows operating system (minimum requirement: Windows 95 but also later versions)
- standard serial connector / cable
- instruction for firmware upgrade picture optimizer plus (Dateiname.zip)
- upgrade software „bootloader“ (bootloader.zip)
- up-to-date firmware file (firmware_pp_v200.zip)
- supplement to user manual including the features of the new firmware (supplement_user manual_v200.zip)

The files needed can be found at www.cinemateq.com in the Support Center section under „Firmware Upgrade“. Please download the following files one after the other (just „click“ and follow the instructions shown on your monitor/display)

- bootloader.zip
- firmware_pp_v_xx.zip
- supplement to user manual for v_xx.zip

(xx indicates the most up to date version number, e.g. 2-00 for version 2.00)

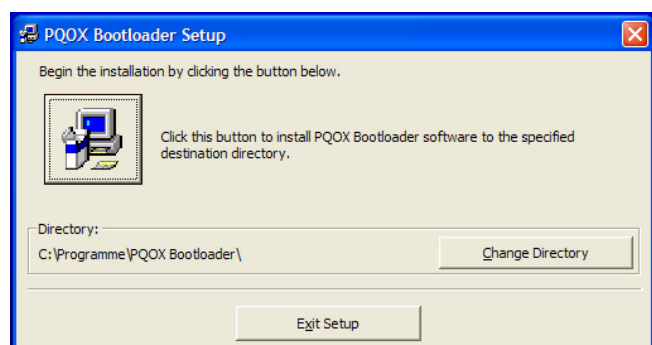
Please save all files in a folder on your harddrive, that you can easily find again later. Files with the extension '.zip' need to be decompressed first after download is complete. Please utilize known tools as e.g. WinZip (learn more under www.winzip.de) and save the decompressed files in the upper mentioned folder.

Step 1: Installing Bootloader

First of all you need to install the upgrade tool „bootloader“ onto your PC. The bootloader is a small Windows utility controlling the proper transfer of the firmware data to the picture optimizer plus using a serial connection.

Therefore please access the directory / folder you decompressed the file bootloader.zip into and start the installation process by double clicking the file „setup.exe“. Please close all active programs beforehand.

Just follow the installation instructions shown on your monitor / display, the utility will install automatically. If you'd like to change the destination directory, you can choose another directory for the installation by clicking „Change Directory“.



In case you want to remove bootloader again, please refer to the “Add or Remove Programs” section in the Windows Control Panel.

After the installation is completed you can start the bootloader by clicking "Start/Programs" - but please wait with that until the next step.

Step 2: Upgrade preparation

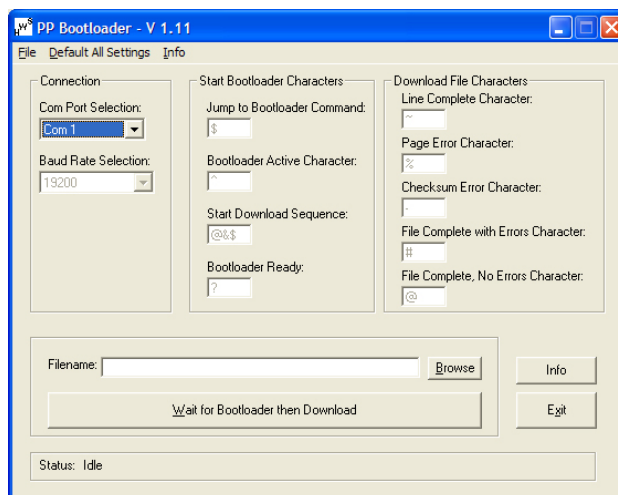
First of all please turn off the picture optimizer plus with the ON / OFF switch located at the left rear side of your device.

The connect the serial port of your PC (COM 1 or COM 2) with the „remote port“ of the picture optimizer plus using a standard serial connector / cable. Please absolutely ensure that the connectors are fixed properly (bolted) and cannot be interrupted!

Now start the bootloader on your PC (accessible via Start / Programs).

In the „Com Port Selection“ drop down menu please select the COM Port your serial connector / cable is linked to.

Now click the „Browse“ button and select the firmware file (firmware_pp_v_xx.hex) to be transfered by browsing the directory structure shown .



Step 3: Starting the upgrade

Your PC is now ready for transferring the firmware file. First of all click the „Wait for Bootloader then Download“ button in the bootloader utility in order to activate the “ready-to-transmit-status”.

Now please turn the picture optimizer plus on again using the ON / OFF switch, wait for 10 seconds and then reactivate the device out of the standby mode by remote control ([O]-button).

The transfer of the new firmware file starts immediately after reactivation. The progress of the data transfer is shown in the bootloader window as a backwards counting number (in the lower section of the dialog box).

After successful transmission the bootloader quotes this via an infobox that needs to be confirmed with O.K.

Step 4: Finishing the upgrade

Now turn the picture optimizer plus off completely using the ON / OFF switch, disconnect the serial connection to your PC and close the bootloader utility by clicking the “Exit” button.

Turn on the picture optimizer plus again and reactivate the device out of the standby mode.

After performing a „Factory Reset“ (please refer to the user manual), your cinemateq picture optimizer plus is ready for operation with the new firmware version. Which firmware version is actually installed on your device is shown in the status info (press [OK] button once) under the point “version”.

Attention: We strongly recommend to look up newly introduced respectively changed features in the „supplement to the user manual“ (pdf file) before using the picture optimizer plus with the new firmware for your convenience.

In case of any problems, please contact our support hotline as described in the user manual.